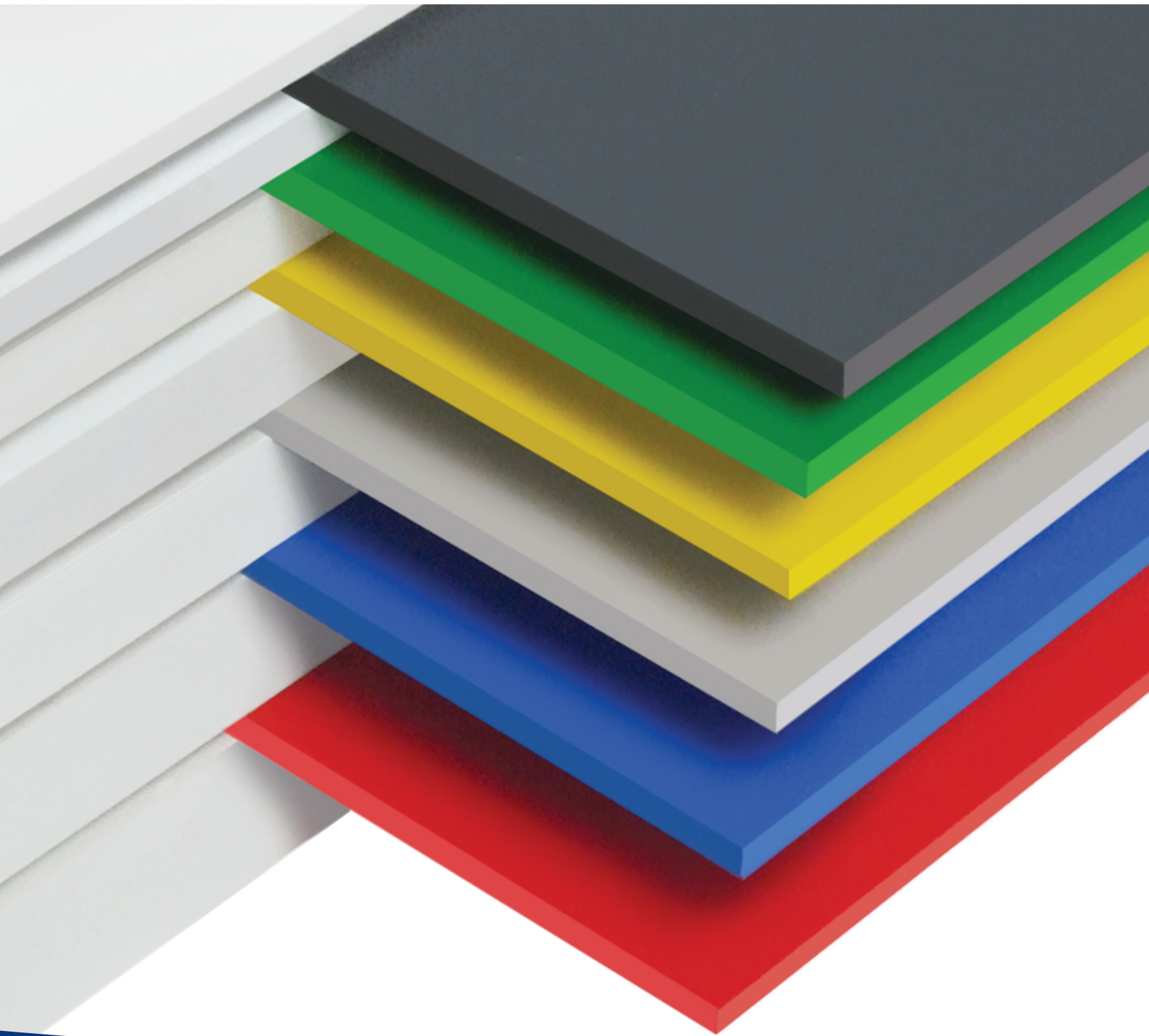


cowdroy

WETLINE SERIES

WETLINE ADVANCED POLYMER BOARD



WETLINE SERIES

WETLINE ADVANCED POLYMER BOARD

An advanced PVC based polymer board with all the working and processing properties of timber based board with a host of added benefits.

FEATURES

- Waterproof
- Lightweight
- Resistant to mould & mildew
- Weather resistant
- A good acoustic & thermal insulator
- Can be thermally moulded into unique shapes
- Resistant to most acids and alkalines
- Resistant to white ant & termite attack
- Self extinguishing within 10 seconds when flames

A light weight polymer board ideally suited to applications where a sturdy, weather resistant panel or substrate is required.



Possible applications of wetline as a substrate



WETLINE is delivered to you with a protective membrane on one side, as protection during transit, storage and processing.

When used as componentry for cabinet construction, all joints must be glued and either nailed or screwed.

When used as a wall sheeting or substrate, panels must be glued and either nailed or screwed at regular intervals onto framework at 450mm centres.

When working with WETLINE, readily available adhesives, sealing adhesives and joint fillers suitable for PVC with a polyurethane base give optimum results.

In applications where long continuous butt joints or corner joints are required WETLINE can also be heat welded using standard PVC heat welding equipment.

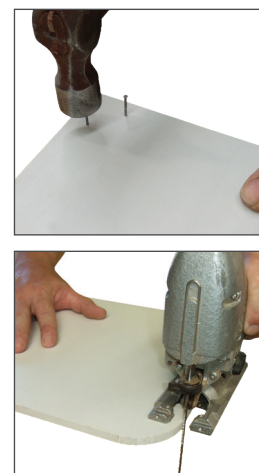
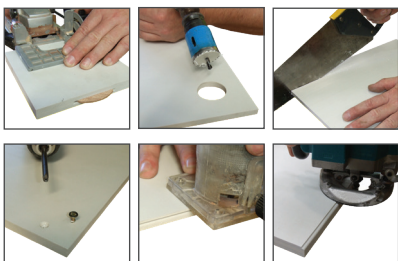
Cowdroy does not recommend WETLINE be used for door applications .

The advanced formulation of Wetline ensures a far superior “close to edge fixing” and reuse of fixing points than wood chip and fibre based panels.

WETLINE is a thermoplastic polymer, care must be taken when exposed to continuous sunlight and high temperatures, an appropriate thickness of sheet should be selected with adequate fixings to a backing frame that allows for thermal expansion.

WETLINE have the potential to be used in a variety of innovative applications, as such fitness for purpose in specific applications is the responsibility of the customer.

Working with Wetline requires the skills and tools normally used in a panel and joinery business.



NOTE: Do not use Toluene (thinners) or petroleum based solvents. Clean only with water based detergents.

The standard white of WETLINE may vary from batch to batch.

PRODUCT	CODE	SHEET SIZE	THICKNESS	DENSITY	PACK SIZE
WETLINE*	LW12.122.244WH	2440 x 1220	12mm	600 kg/m ³	BOX OF 3
	LW16.122.244WH	2440 x 1220	16mm	600 kg/m ³	BOX OF 2
	LW18.122.244WH	2440 x 1220	18mm	600 kg/m ³	BOX OF 2
	LW25.122.244WH	2440 x 1220	25mm	600 kg/m ³	BOX OF 1

WETLINE are of identical composition.



For your safety and environmental responsibility, NO Lead or Organotin based compounds have been used in the production of WETLINE

Cowdroy is an Australian company supplying industry leading door and window hardware to retail, trade and architectural outlets.

Established in 1890, Cowdroy specialises in door tracking systems, window and door seals, replacement wheels & rollers, sliding glass cabinet tracking systems and door hardware.

For all our product information visit the Cowdroy website at:
www.cowdroy.com.au

HEAD OFFICE SYDNEY

38 Redfern Street
Wetherill Park, 2164
Phone: (02) 9604 3000
Fax: (02) 9604 8129
Sales Fax: (02) 9609 3694

Melbourne

Unit 1/34-36 Deans Court
Dandenong South, VIC 3175
Ph: 1800 269 376
Fax: (03) 9791 6759

Perth

1 Modal Crescent
Canning Vale, WA 6155
Ph: (08) 9455 5354
Fax: (08) 9455 5461

Launceston

ACCESS HARDWARE Pty Ltd.
Goodman Cres, Invermay 7248
Ph: (03) 6324 4900
Fax: (03) 6324 4901

Brisbane

Unit 1/90 Pritchard Road
Virginia, QLD 4014
Ph: (07) 3265 3311
Fax: (07) 3265 3733

WEBSITE

www.cowdroy.com.au

EMAIL

sales@cowdroy.com.au

NATIONAL CALL

1800 COWDROY (1800 269 376)

Auckland NZ

18 Kerwyn Ave
East Tamaki, Auckland 2013
Phone: (09) 274 7279
Fax: (09) 274 4453

Christchurch NZ

56 Treffers Road
Sockburn, Christchurch 8042
Phone: (03) 943 2060
Fax: (03) 943 2061

Adelaide

Unit 2/52 Wodonga St
Beverley, SA 5009
Ph: 1800 269 376
Fax: (02) 9604 8129

Townsville

Unit 1/42 Carmel Street
Garbutt, QLD 4814
Ph: (07) 4779 5122
Fax: (07) 4725 5495

cowdroy



Wetline Advanced Polymer Board_Feb19

